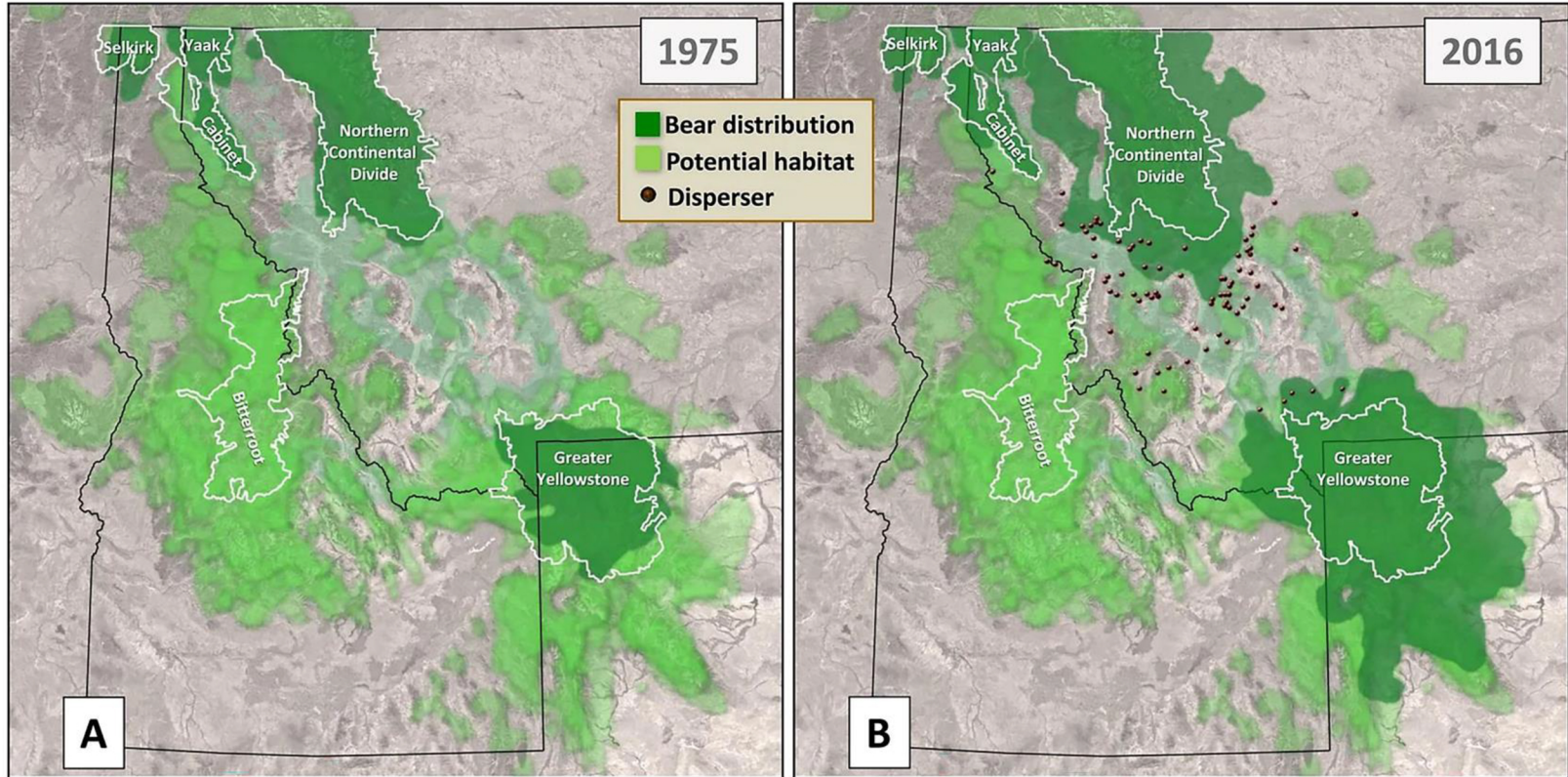


Historical Grizzly Bear Distributions vs Potential Suitable Habitat

Grizzly Times <https://www.grizzlytimes.org/potential-restoration>

by David Mattson



These maps show distributions of grizzly bears in the US Northern Rockies (dark green) relative to Recovery Areas (white lines) and current potential suitable habitat (light green) during (A) 1975 and (B) 2016. Locations of grizzly bears documented outside the bounds of core distributions as of 2016 are shown as red dots in (B). Representations of potential suitable habitat are a composite of 7 different models, with greater replication of results denoted by darker shading. The main take-away from these maps are that, first, distributions of grizzly bears have expanded substantially since ESA protections were implemented in 1975; second, extensive areas of potential suitable habitat remain unoccupied, especially in central Idaho; and third, Recovery Areas encompass only a minority of suitable habitat especially in the Yellowstone and Bitterroot areas. All the models used to estimate distributions of potential suitable habitat accounted for intrinsic habitat productivity and remoteness from humans.