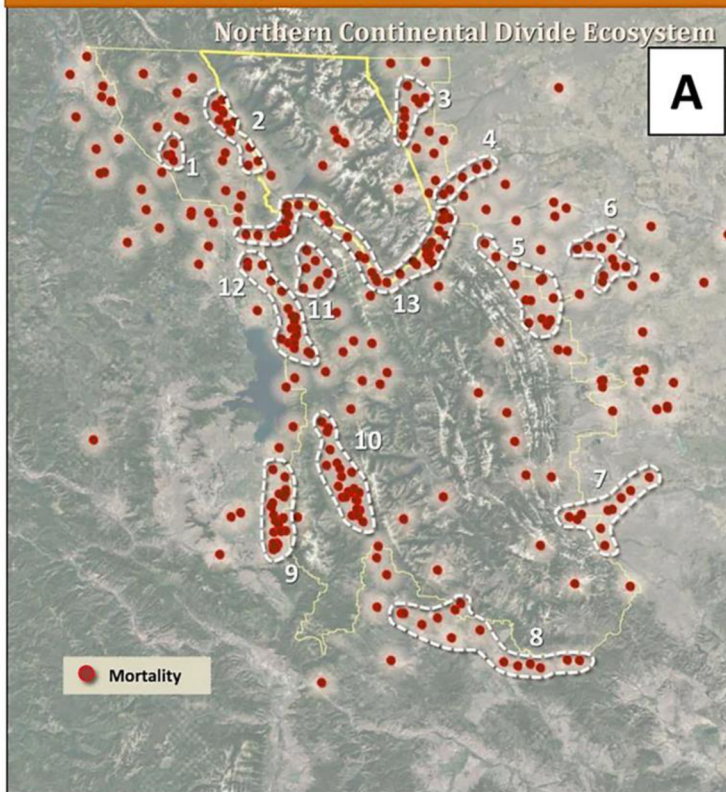


Patterns of Mortality – Northern Continental Divide Ecosystem

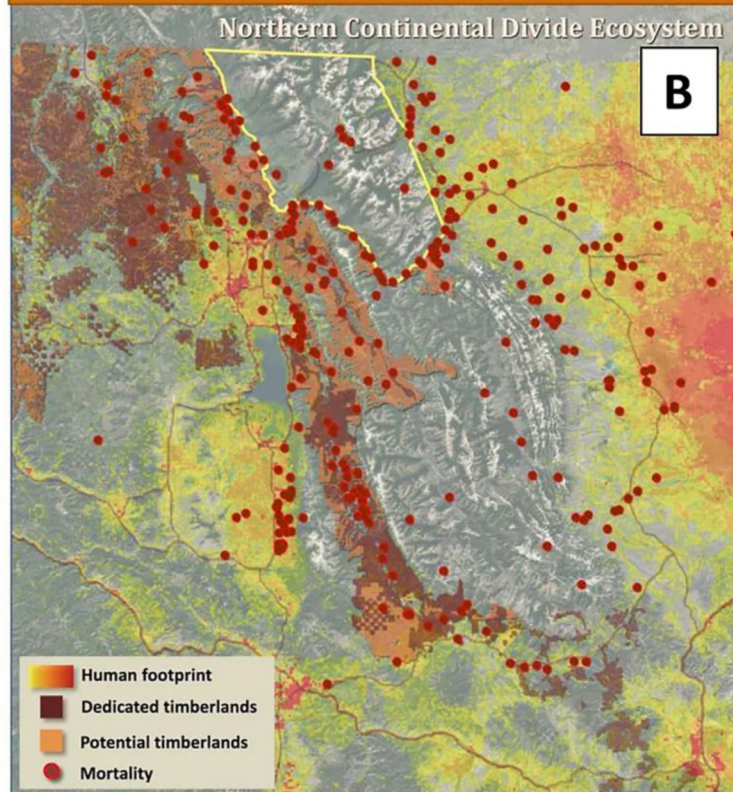
Grizzly Times <https://www.grizzlytimes.org/landscapes-of-conflict>

by David Mattson

Distribution of Grizzly Bear Mortalities 2004-2018



Human Footprint, Industrial Timberlands & Bear Mortalities



These maps show (A) the distribution of grizzly bear mortalities in the Northern Continental Divide Ecosystem during 2004-2018, superimposed on (B) different causal factors. Map (A) also shows mortality hotspots. Map (B) shows the distribution of mortalities relative to the human footprint (shades of yellow to orange), major highways (red lines), and roaded US Forest Service lands (tan-brown), with lands devoted to timber harvest shown in dark brown. The human footprint represents any permanent appropriations of land for human purposes, including croplands on plains to the east of the main distribution of grizzly bears. The main takeaways are, first, the striking concentration of mortalities along major highways (hotspot 13), especially when superimposed on agricultural lands (hotspots 8 & 9); and, second, an equally striking concentration of mortalities on or near roaded US Forest Service lands (hotspots 1, 2, 10, 11, and 12). Increasing numbers of bears are also dying along riparian corridors passing through agricultural lands on the plains to the east of the Rocky Mountain Front.